



# 7650 – Q<sup>2</sup> Permanent Pro Easy On Quartz Ceramic Coating Easy to apply DIY Detailing Coating Technology

## Application Instruction

The **7650 Quartz Coating** can be applied to almost any (auto/marine/aviation) paint. To attain optimum performance it is essential that the target surface is perfectly clean; it must be completely free from waxes, silicone coatings, etc., otherwise the coating will not be able to bond to the surface. Before full application, please always carry out a test on an inconspicuous location (eg. in the engine compartment). Do not apply the coating to freshly painted surfaces as the target surface must be completely cured and stable before application. Even though the **7650 Quartz Coating** technology is designed for DIY application it is strongly recommended that a practice application is conducted on an inconspicuous area in order to “get a feel” for the application process. In addition the polishing process should be practiced so that the desired level of gloss finish is attained.

Please ensure that the application is performed in a well ventilated and dust-free area. We recommend that you use a protective mask during application as the liquid contains solvents. Wearing protective gloves and eye protection is also recommended (Please refer to the MSDS). The surface to be coated should not be too hot; do not coat the car paint if the car was located directly under the sun before coating, otherwise the liquid will “flash off”, initial curing will be too rapid, and the polishing will be considerably more difficult. Ideally the process should be conducted at an ambient temperature of 20°C (+/- 5°C). Plan your work. Apply the coating in small sections eg. one body panel at a time.

## Step by step instructions:

### 1. Mask off areas you do not wish to coat or which may be sensitive to solvents

Mask off sensitive areas such as Plastic parts carefully. Plastic parts can also be coated if desired. First test on an inconspicuous area.



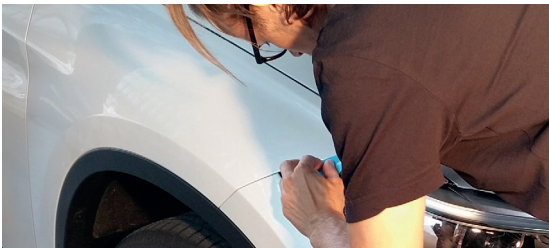
### 2. Pre-Cleaning

Remove swirl marks and micro scratches prior to application of the coating.

First, meticulously pre-clean the car paint and the rims; for this you may use a standard cleaner (free of waxes or silicones) or our pre-cleaner Biosativa®.



**The better you perform the pre-cleaning, the better the adhesion and subsequent longevity of the coating.**

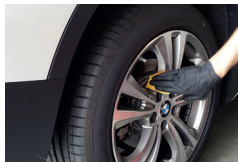


After completion of the general cleaning process, deep clean the surface with alcohol (e.g. at least 70% isopropyl or ethanol alcohol), so that all contaminants are removed from the surface. The use of a clay bar cleaning process is also suitable. The simple message is that the coating should only be applied to surfaces which are free of contamination.



### 3. Application of the coating

Use a thin and smooth micro-fiber cloth to apply the finish (a cloth of approximately 10 x 10 cm is recommended). Completely moisten the cloth with 7650. Apply the coating swiftly and evenly by wiping (always in one direction). As previously noted the time between application and buffing will vary depending on the area covered and the prevailing temperature but as a simple guide it is suggested that for large areas (eg the roof) buffing should commence 5 minutes after the area has been coated. In most instances buffing should commence between 3 and 10 minutes of the surface being coated. **3 minutes in very hot and humid environments.**



## 4. Buffing/Polishing the coating

Do not use excessive pressure when buffing the coated surface. Use a medium to smooth micro-fiber cloth. (As this is a coating which is designed for DIY application buffing can be conducted with microfiber cloths.) You must ensure not to aggressively remove too much of the finish. Ensure that all blemishes are removed. If for some reason you delayed the polishing process, and „high spots“ occur, immedia-

tely apply another layer of the 7650; this will soften the layer below, and you may polish anew. Finish the buffing with a fine soft „peach skin“ texture micro-fiber. It should be stressed that there is no need to buff the surface with great force. Gentle buffing is sufficient. Do not touch the surface after buffing. The use of powered buffing machines is of course possible. Test the process to establish the optimum application method for your equipment.



In warm conditions the coating becomes dust dry after 2 hours and touch dry after 5 hours. After this, the coating will be dry enough that you may use the vehicle again but the coating is still far from being fully cured and so avoid brushing against the surface with bags or keys.

We recommend that you use a protective mask "P3" (e.g. 3M) during application as the liquid

is solvent based and contains VOCs. Wearing mask, protective gloves and goggles is strongly recommended. Always apply in a well ventilated area.

The coating will cure faster if the surface is hot and so it will be advantageous to place the car in direct sunlight after the first 2 hours of curing.

Within the following 10 days the vehicle should not be cleaned as complete curing

takes at least 8 days (depends on the temperature and the humidity), otherwise the finish may be damaged, especially if a "drive through" car wash is used.

**Do not, at any time, wipe the coated surface with alcohol/solvent based cleaning liquids.**

**50 ml Art. No. 7650-50**  
**100 ml Art. No. 7650-100**  
**1.000 ml Art. No. 7650-1**



CCM GmbH | Diepenbroich 8 | D-51491 Overath | phone +49 (0) 2206 938590-0  
[www.youtube.com/CCMGermany](http://www.youtube.com/CCMGermany) | E-Mail [info@ccm-international.eu](mailto:info@ccm-international.eu)

**[www.quantum-quartz.com](http://www.quantum-quartz.com)**